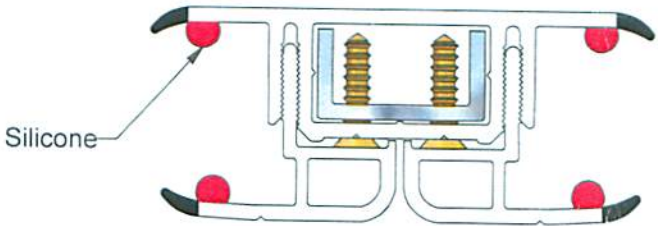
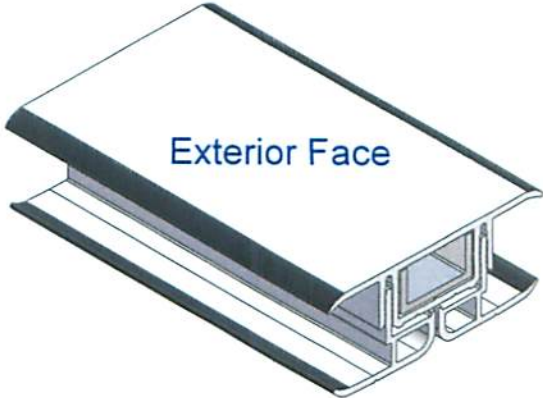
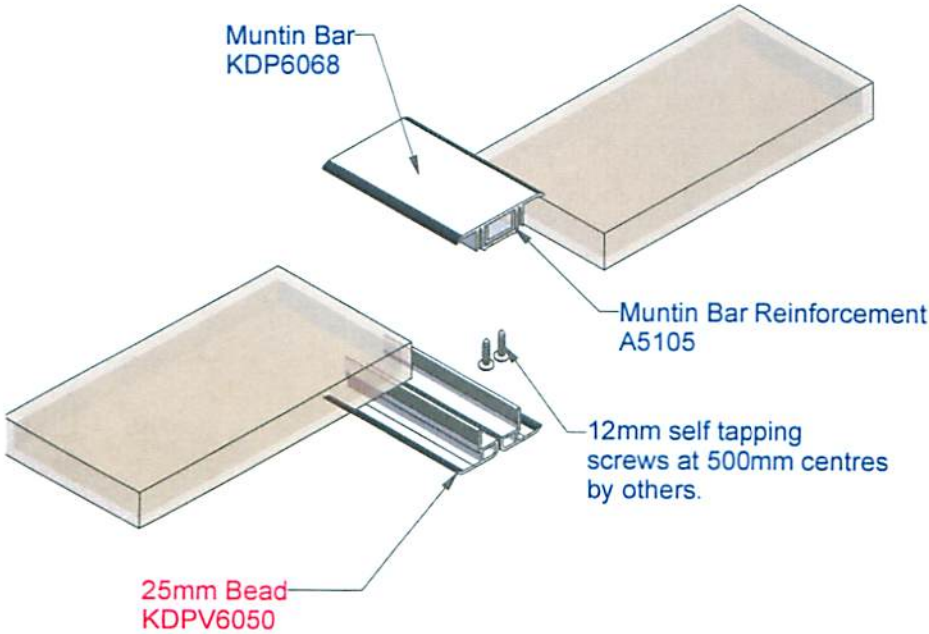




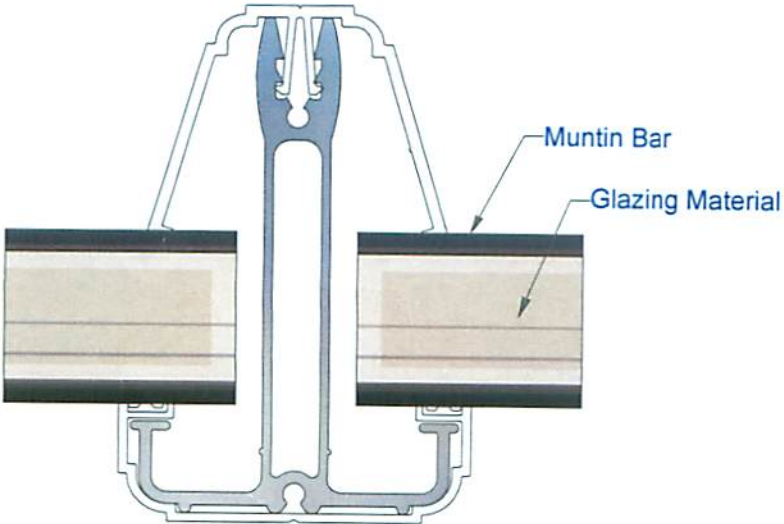
K2 CONSERVATORIES

Muntin Bar

pwillan	
Date:	01/04
Issue:	1

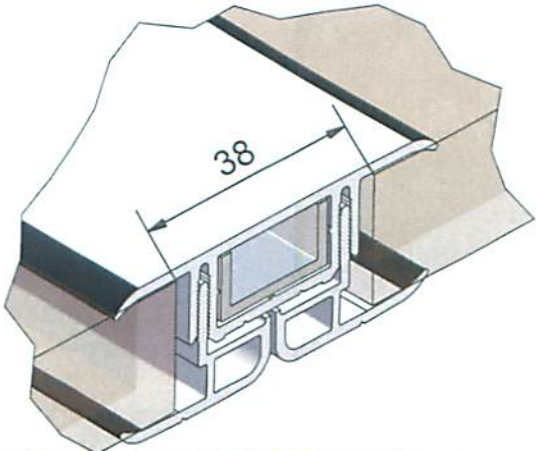


**25mm Muntin Bar Kit
KDC9245WH25**



Please remove the protective tape on the glass and use **Low Modulus Neutral Cure Silicone**.

Muntin Bar must be the same width as the glazing material. Both Top and Bottom panels must line through.



Allowance for the Muntin Bar is 38mm as shown above.

KEY

	Existing Products
	New Products

Muntin Bar Installation, Step by Step Guide.

Prior to starting the following must be adhered to:-

Install the muntin bar the correct way up i.e. beads to the inside of the conservatory, wide section to the external side

Muntin bar is cut to the same width as the glass unit both top section and beads

Low modulus neutral cure silicone must be used (on Pilkington Active see other alternatives)

Remove tape (see below)

Ensure glass is correct width and remains central

Pack out glass (see below)

Step by step guide.

Remove any protective tape where the muntin bar is to be located. N.B. Please remember do not remove the tape to the extent that it exposes the hot melt

Step 1

Push glass above roof vent into ridge and centralise.

Apply silicone to the underside of both lips to the top section of the muntin bar and on one piece of bead. (see diagram)

Partly (not fully) locate the siliconed bead into top of muntin bar.

Position muntin bar next to top piece of glass.

Lift glass and push muntin bar over glass. Clamp bead and muntin bar onto glass (silicone should then ooze out).

Step 2

Position bottom piece of glass near muntin bar and centralise.

Silicone lower bead.

Lift upper glass with muntin attached (by glass not muntin) and like before partly locate lower pre siliconed bead into muntin bar and bring to rest.

Push and lift bottom glass into muntin bar and lower.

Knock muntin bar from above ensuring the lower bead is supported when knocking takes place (silicone should then ooze out).

Pack either side of glass prior to knocking top cappings into position